



NURTURE INTERNATIONAL SCHOOL
(Affiliated to CISCE, New Delhi)
WORKSHEET

Name: _____

Class: V

Date: _____

Subject: EVS

UNIT-D

Answer the following questions:

Q-1) Which type of joint has the greatest range of motion?

Q-2) Which type of joints act like a hinge on the door?

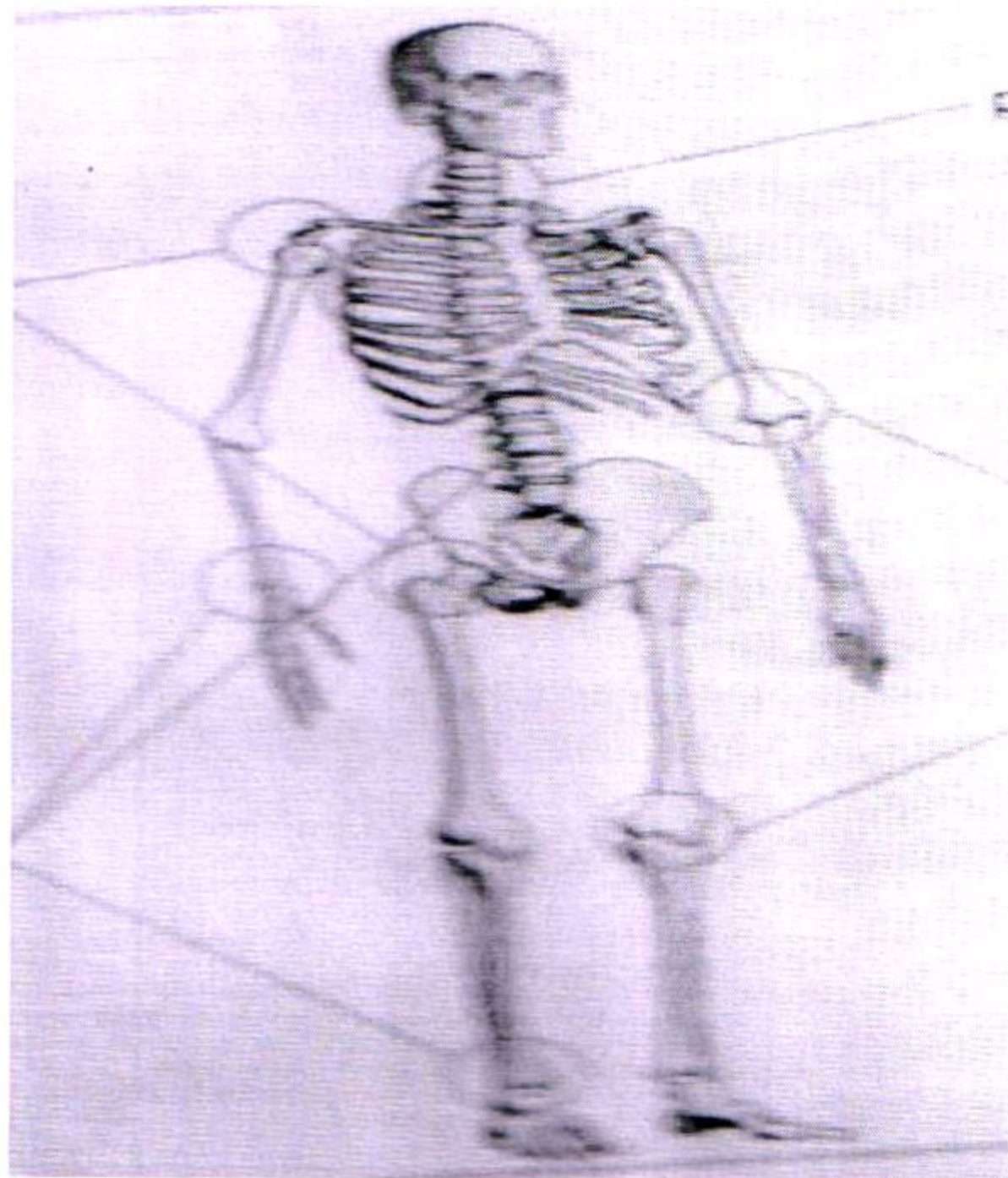
Q-3) Which type of joints move a little?

Q-4) Which type of joints contain a liquid and why?

Q-5) Which type of joints are found between the surfaces of two flat bones?

Q-6) Write the name of first and second bone of vertebral column?

Label the joints:





NURTURE INTERNATIONAL SCHOOL
(Affiliated to CISCE, New Delhi)
WORKSHEET

Name: _____

Class: V

Date: _____

Subject: EVS

UNIT- E

Answer the following questions:

Q-1) How many muscles are there in the human body?

Q-2) Name the largest muscle in the body.

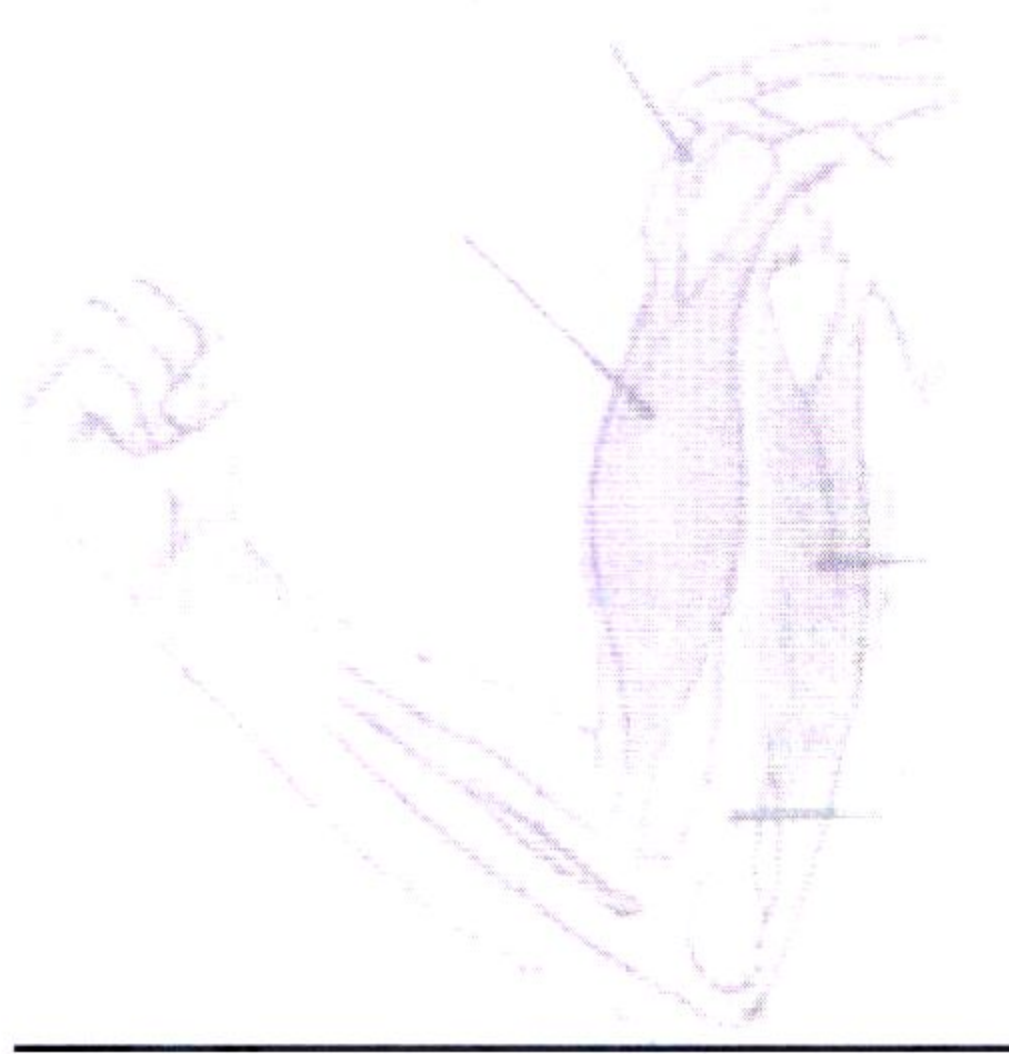
Q-3) What is the mean of relaxation?

Q-4) What is RICE?

Q-5) Who can support several tones of weight?

Q-6) Who protects bones from rubbing against each other?

Label the following diagram of the arm:





NURTURE INTERNATIONAL SCHOOL
(Affiliated to CISCE, New Delhi)
WORKSHEET

Name: _____

Class: V

Date: _____

Subject: EVS

UNIT-C

Answer the following questions:

- Q-1) What are produced by the marrow of some long bones?
Q-2) Which of the skull bones are movable?
Q-3) Why the skulls of skeletons have no nose or ears?
Q-4) What are destroyed by the liver?
Q-5) What are great sources of calcium?
Q-6) What type of activities are important in keeping our bones strong and healthy?

Name the following:

- 1) Two bones of the lower leg
- 2) A long bone of upper arm
- 3) The largest and the strongest bone on our face
- 4) Shoulder blades
- 5) Collar bones

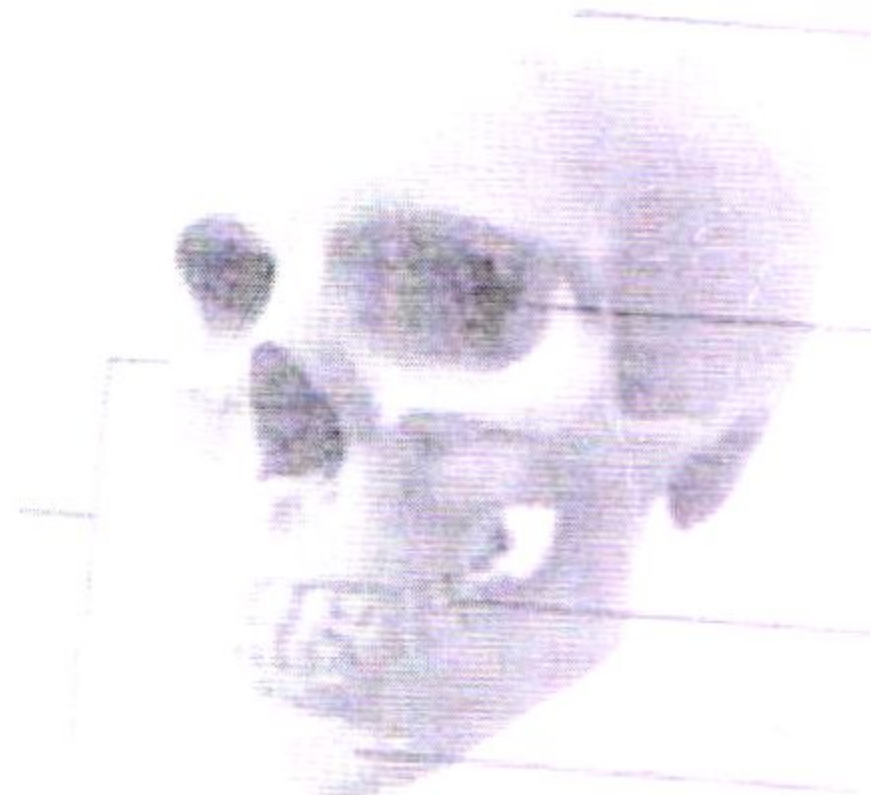
Write true or false:

- 1) The cartilages are harder than bones.
- 2) The forearm has two bones.
- 3) The Metacarpal is the bone that connects the finger and the wrist.
- 4) The stirrup bone is as small as a rice grain.

Fill in the blanks:

- 1) The smallest bone inside our ear is called _____.
- 2) After death, _____ rots faster than bones.
- 3) On an average, a plaster cast stays on for about _____ weeks.
- 4) An average of _____ red blood cells are produced each second by the bone marrow.

Do the labelling in the following diagram of the 'SKULL'





NURTURE INTERNATIONAL SCHOOL
(Affiliated to CISCE, New Delhi)
WORKSHEET

Name: _____

Class: V

Date: _____

Subject: EVS

Answer the following questions:

Q-1) How many vertebrae are found in the human skeleton?

Q-2) How many ribs are joined to the spine at the back and to the breast bone in the sternum?

Q-3) Write the other name of-

a) Vertebral Column

b) Breast Bone

Q-4) How does backbone help our body?

A) Fill in the blanks:

1) Ribs are located in our _____.

2) Curved bones of ribcage are _____ and flexible.

3) Bones of ribcage move outwards when we breathe in, to let the _____ expand.

4) The spinal cord is responsible for sending messages from the _____ and receiving it from other parts of the body.

A) Do the labelling in the following diagram

